



# Let's Make a Run For It!

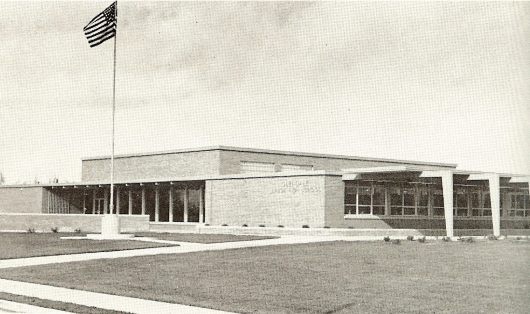
Together We Can Go the Distance





# THEN...

**Salt Lake City School District** is the oldest public school district in Utah and serves the students and families of the capital city.



By **1955**, a middle school was needed to serve 7th and 8th grade students on the west side of Salt Lake City. **Glendale Junior High School** opened next to the existing Mountain View Elementary School, which opened in 1954.



The evolution of education and changing needs of students and educators lead to **Mountain View Elementary School** being rebuilt in **2002**.



In **2007**, the new bigger and state-of-the-art facility opened at the same site. Now also serving 6th grade students, the school was renamed **Glendale Middle School**.



The **Glendale Community Learning Center** (CLC) opened in **2013** on the Glendale-Mountain View campus. The CLC brings together partners to offer a range of supports and opportunities for children, youth, families and the Glendale community.

# NOW...

The Glendale-Mountain View campus makes a dramatic impact on student success through a holistic approach to education. They continue to work tirelessly to build relationships that offer a wide range of supports and opportunities for students, families and the community.

The community track will give the school another outreach mechanism, more student enrichment programs and additional wellness opportunities for the whole community.



The Glendale-Mountain View campus serves an incredibly diverse student population:

- **1,233 students** attend Glendale Middle and Mountain View Schools (Pre-K through 8th grade)
- **80% students** qualify for the federal free and reduced lunch program
- **92% of students** identify as students of color
- **60% of students** are English Language Learners (ELL)
- **29 languages** spoken by students
- **35%** mobility rate

## 2020-21 Highlights

- In 2021, **first lady Jill Biden** visited Glendale Middle School.
- Mountain View Elementary School received the **National Blue Ribbon School** award in 2021.



*We need community action and policies to support healthy communities. - Mark Hyman*

# NEXT, WITH YOUR HELP...

A six-lane **community track** around the Glendale Middle School soccer field.

The track will be the first track at a middle school in the Salt Lake City School District. Offering track and field activities will motivate students to work hard and develop mental toughness.

A track on the Glendale campus will expand the intermural programs offered - giving more students the chance to participate. It will also help students planing to participate in high school track and field to train.

The track will also support the surrounding community by providing a safe place everyone can use to exercise, ultimately leading to healthier lifestyles. Currently, Glendale community members must travel across town to access a track. Due to these time and travel constraints, it has been proposed by the Glendale community students, parents and community leaders to build a track.

**Together, we can make Glendale a stronger and healthier community.**



**LET'S MAKE A  
RUN FOR IT**









# BUILDING A STRONGER COMMUNITY

As Fortnite and Minecraft dominate lunch talk and after-school activities, the need for places that kids and adults will enjoy themselves and get active continues to rise.

A community track is great place for people to get their exercise for better physical and mental health. A community track is also a tremendous addition to the Glendale community because it beneficial for all age and ability groups.

Outcomes of building the community track on the Glendale-Mountain View Campus:

- Create meaningful **connections** between youth participants and program staff.
- Staff will establish expectations and appropriately respond to positive and negative participant behavior.
- Availability of intentional **learning activities** that will help student **develop specific skills**.
- Provide opportunities for an active lifestyle to help community members **get and stay healthy**.
- A **safe place** to work out with a reduced short- and long-term injury risk because it will have the proper surface.
- Increased participation in **after-school enrichment programs**.
- More students participating in middle and high school **track and field sports**.

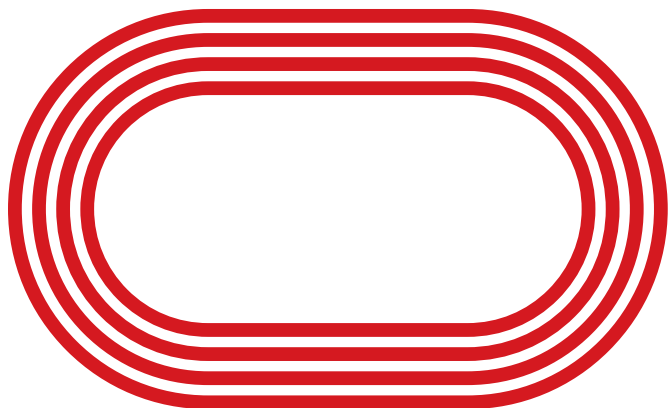






*Physical fitness is not only one of the most important keys to a healthy body, it is the basis of dynamic and creative intellectual activity.*

*- John F. Kennedy*



**LEAVE IT ALL  
ON THE TRACK**





# GLENDALE

## Middle School



**Let's Make a Run For  
It Campaign**

**Goal: \$583,786**